

Customer :

customer

Customer part :

customer part

Comment :

Comment

S1=2.61

S2=3.7

Tmax=463

Tp S2=502.0

PI=0.41

HI=115

Sample =1674.60

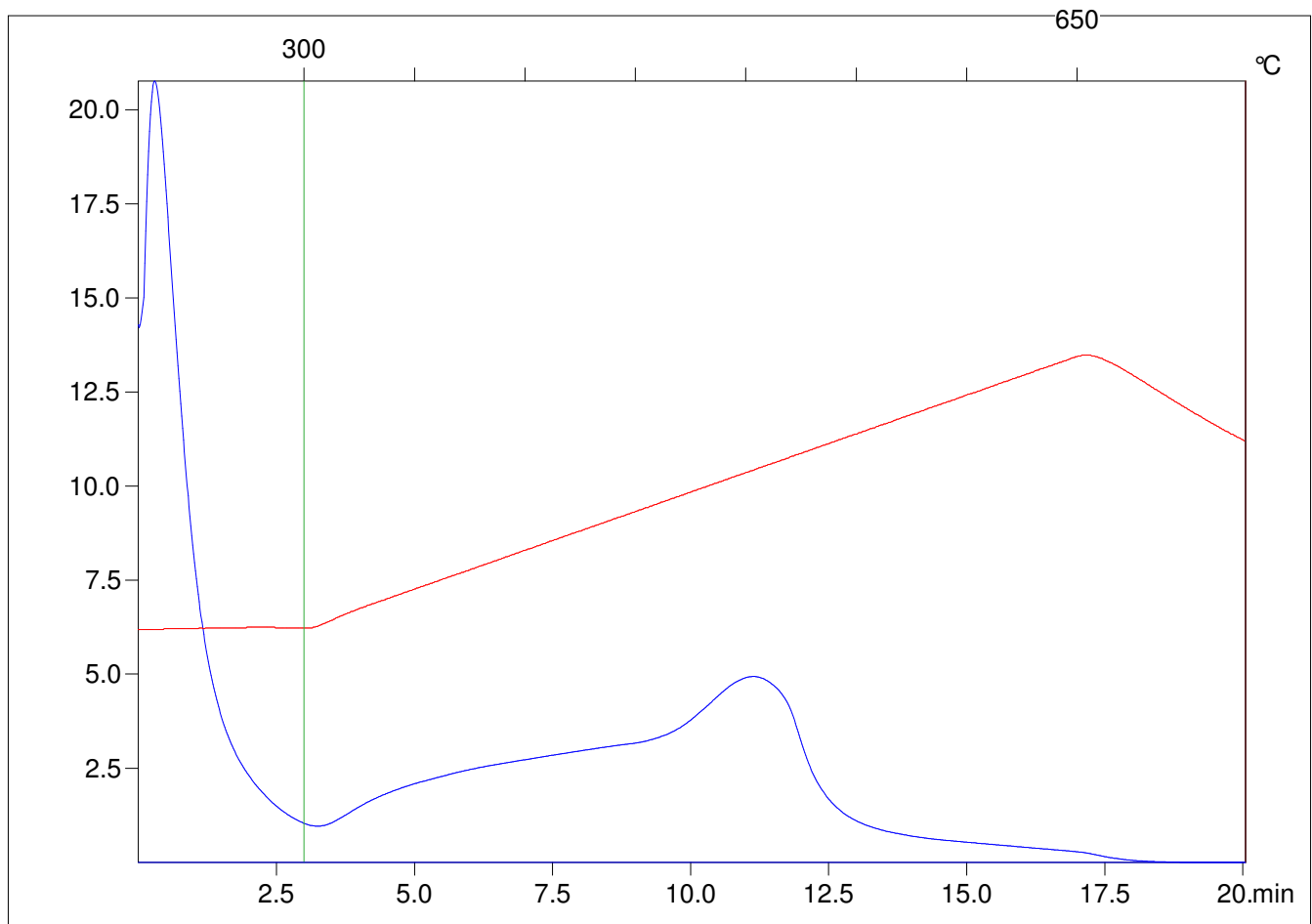
Method =Bulk Rock

Cycle=Basic

KFID(10*9)=1444

Qty =71.0

TOC=3.22



C:\VINC\PK1_1792\PK022.R00 : FID pyrolysis graphic

State

Pyro Status

Oxi Status